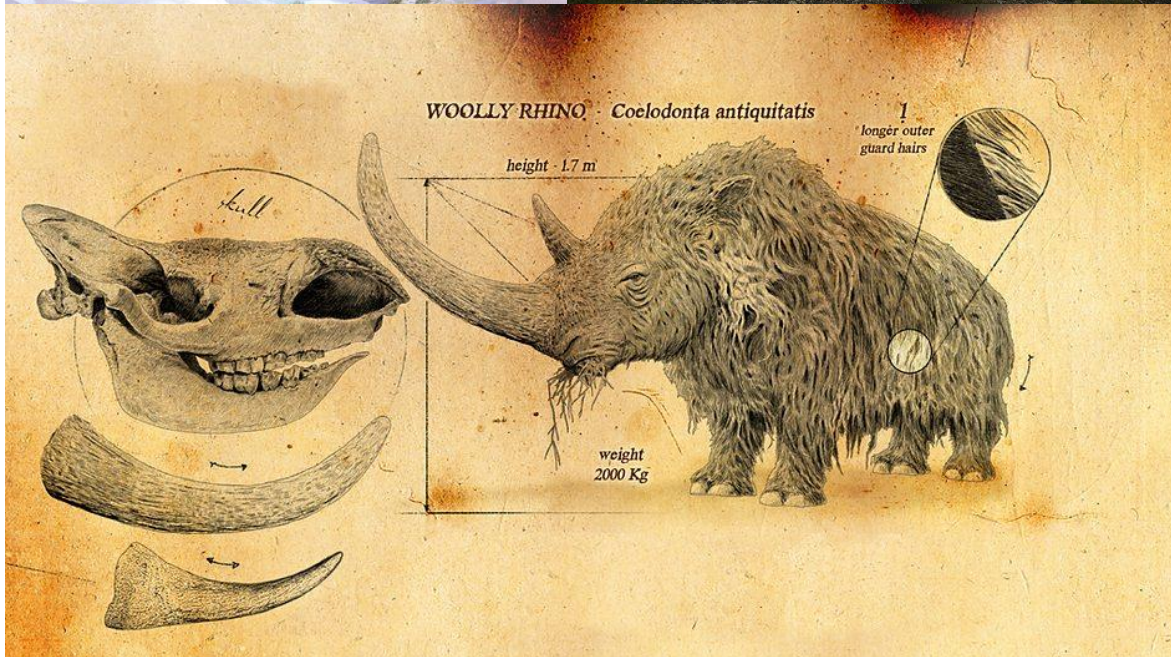


# Woolly Rhino – *Coelodonta*



Height: 2 metres

Length: 3.5 metres

Weight: 2000 kg

Occupied around Kents Cavern: 150,000 – 10,000 years ago

These herbivores had sharp incising teeth at the front of their mouths and mashing molar teeth at the back. It is unknown whether they were grazers that cropped the grass plains like a cow, or if they were browsers that fed from low growing plants. Woolly Rhinos had a covering of fur over their bodies which was the main line of defence against the cold, trapping layers of air near to the skin. they had two horns rising from their snouts. The front horn grew up to two meters and the other horn rose from the middle of the snout being just over half to two thirds as big. in 2009, the remains of a woolly Rhino were found in Kents Cavern, they still havnt been fully excavated and you can see the cornered off area that the bones are still in.

